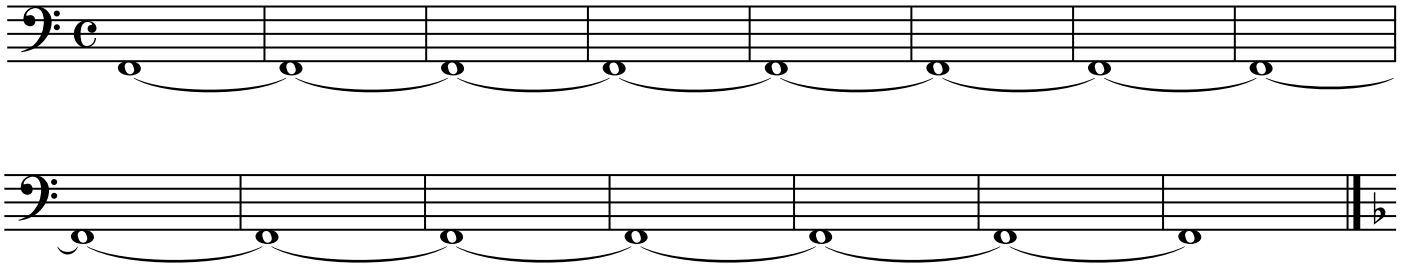


WIBC Timpani Audition

Not to be played with full band - solo timpani audition music

#1 Play long roll ff to pp to ff in 1 minute

Moderato



#2 Play the etude below at a moderato tempo

Moderato (♩ = c. 108)

Six staves of musical notation for exercise #2. The etude features various dynamics (f, p, mf, ff) and time signatures (3/4, 2/4, C). The first staff starts with a fortissimo (f) dynamic. The second staff has a piano (p) dynamic. The third staff has a mezzo-forte (mf) dynamic. The fourth staff has a fortissimo (f) dynamic. The fifth staff has a fortissimo (ff) dynamic. The sixth staff has a fortissimo (ff) dynamic.

#3 Answer the following questions when you upload your mp3 (put in special notes box at time of upload)

- A. What is your secondary instrument strength (snare drum or mallet percussion)?
- B. Do you feel comfortable tuning timpani by yourself?
- C. Can you play the piano (none, beginner, intermediate, advanced)?